

Date: _____ Location: _____

Product: _____ Project: _____

Quantity: _____ Catalog #: _____

LED Explosion-proof Linear Light

CONSTRUCTION:

Fiberglass-reinforced polycarbonate body; diffused polycarbonate lens.

OPTICAL SYSTEM:

LED 3030 chips

WARRANTY:

5-year limited warranty. Actual performance may differ as a result of end-user environment and application.

ELECTRICAL:

Available as 120-277V input.

Operating Temperature:

30W/80W:

-40°C to +55°C (-40°F to +131°F)

50W:

-40°C to +45°C (-40°F to +113°F)

100W:

-40°C to +40°C (-40°F to +104°F)

CONTROL & DIMMING:

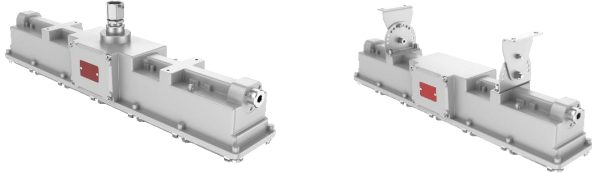
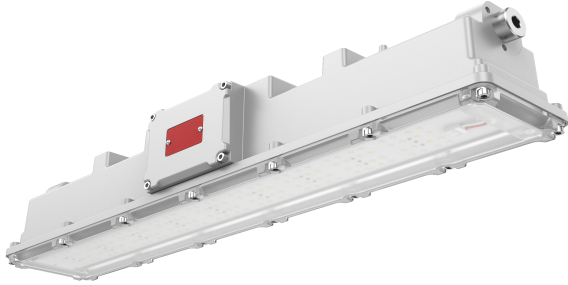
1-10V Dimming

FEATURES

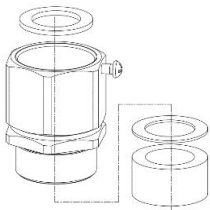
- Class I, Division 2, Groups A, B, C, D
- 2ft:30W/50W, 4ft: 80W/100W
- IP66 & IK08 double protection
- EPA: 2ft:0.07m² (0.7ft²)
4ft: 0.14m² (1.4ft²)
- Well-sealed with special structure and materials
- Easy installation and maintenance
- Lifetime of LED @Ta=25°C(77°F):
 - 77,000hrs-L90
 - 175,200hrs-L80
 - 282,900hrs-L70

SUITABLE APPLICATIONS

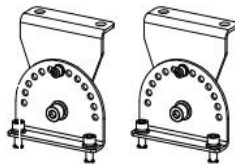
- Warehouses
- Factory
- Workshops
- Petroleum and petrochemical areas
- Gas Station
- Railways
- Ship port
- Public Security
- Fire Protection



INCLUDED ACCESSORIES:



Pendant Mount



Trunnion Mount

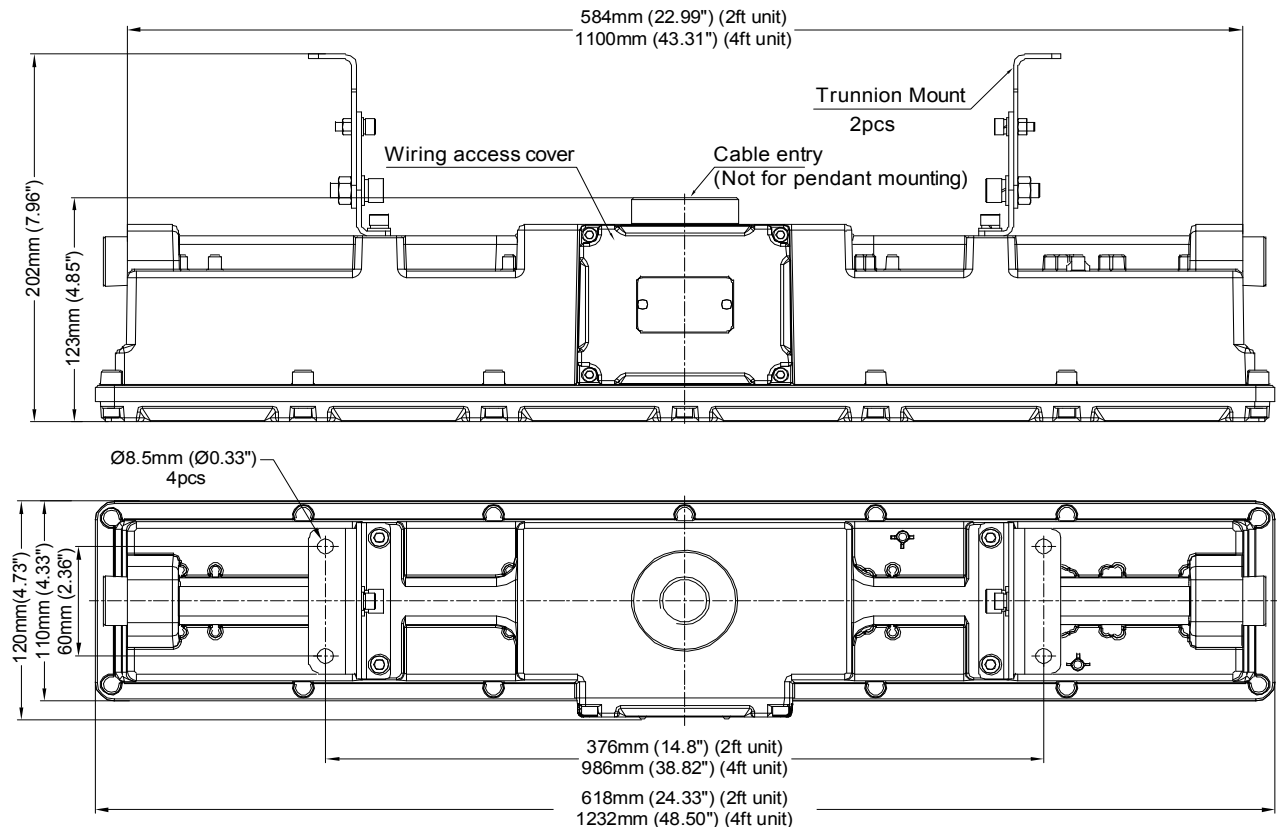


HA06-030-U-50-000-DP-P-DM							
WATTAGE	CCT	LUMENS	EFFICACY	VOLTAGE	CRI	POWER FACTOR	Cable Entry
30W	5000K	4,800LM	160lm/W	120-277V	70	0.9	3x 3/4"NPT cable entry; no exposed power cord; 2 stopping plug;
HA06-050-U-50-000-DP-P-DM							
WATTAGE	CCT	LUMENS	EFFICACY	VOLTAGE	CRI	POWER FACTOR	Cable Entry
50W	5000K	8,000LM	160lm/W	120-277V	70	0.9	3x 3/4"NPT cable entry; no exposed power cord; 2 stopping plug;
HA06-080-U-50-000-DP-P-DM							
WATTAGE	CCT	LUMENS	EFFICACY	VOLTAGE	CRI	POWER FACTOR	Cable Entry
80W	5000K	12,800LM	160lm/W	120-277V	70	0.9	3x 3/4"NPT cable entry; no exposed power cord; 2 stopping plug;
HA06-100-U-50-000-DP-P-DM							
WATTAGE	CCT	LUMENS	EFFICACY	VOLTAGE	CRI	POWER FACTOR	Cable Entry
100W	5000K	16,000LM	160lm/W	120-277V	70	0.9	3x 3/4"NPT cable entry; no exposed power cord; 2 stopping plug;

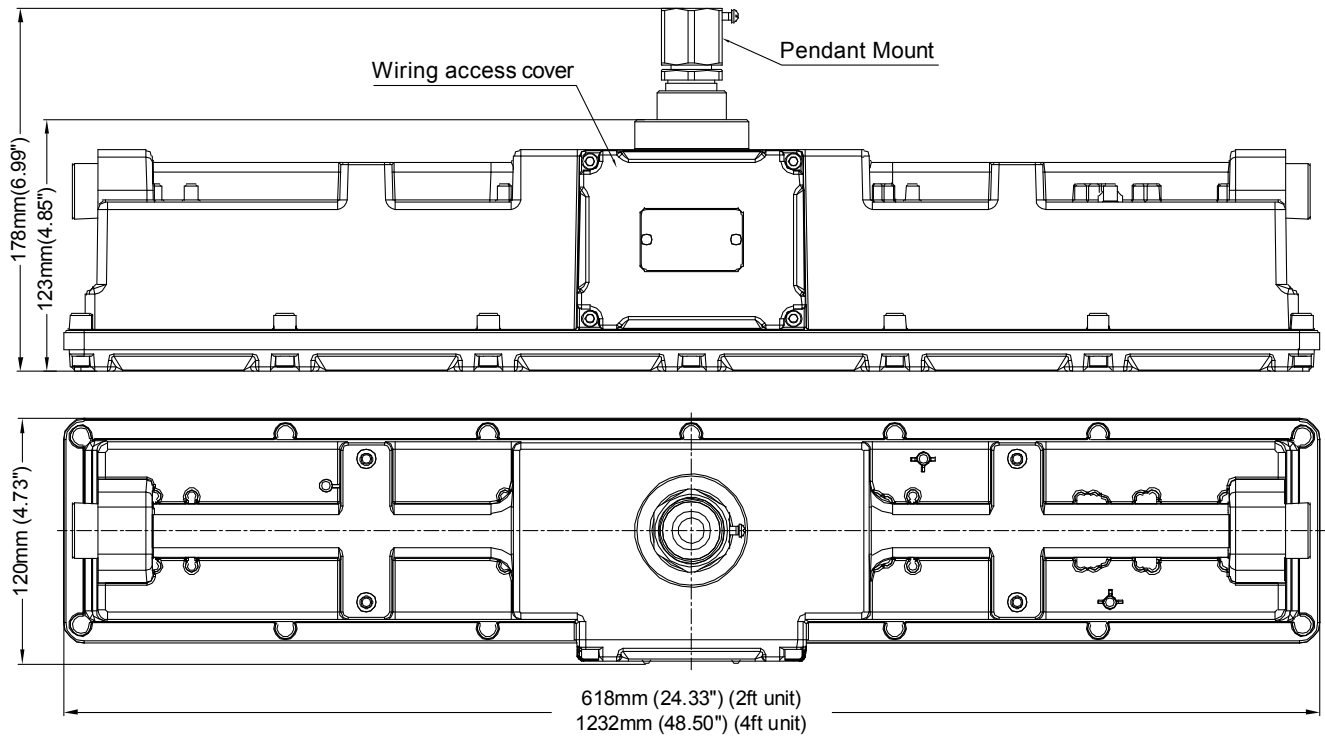
MEASUREMENTS

Trunnion Mount

2FT: 30W, 50W
4FT: 80W, 100W



Pendant Mount



MODEL	QTY	NET WEIGHT	MASTER CARTON SIZE	GROSS WEIGHT	PCS CTN	UPC CODE
HA06-030-U-50-000-DP-P-DM	1	11.22lbs	50.00"x5.51"x7.87"	13.2lbs	1	
HA06-050-U-50-000-DP-P-DM	1	11.22lbs	50.00"x5.51"x7.87"	13.2lbs	1	
HA06-080-U-50-000-DP-P-DM	1	11.22lbs	50.00"x5.51"x7.87"	13.2lbs	1	
HA06-100-U-50-000-DP-P-DM	1	11.22lbs	50.00"x5.51"x7.87"	13.2lbs	1	